

RELAY OUTPUT

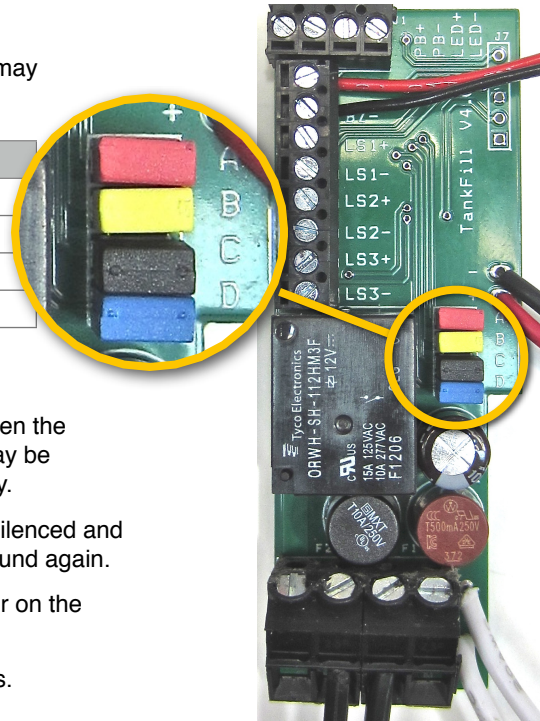
1. CHOOSE MODE

The modes available are selected by the jumpers A,B,C,D. They may be removed if necessary with needle-nose pliers.

JUMPER	FUNCTION	JUMPER ON PINS	JUMPER OFF PINS
A	RELAY RESET	AUTO	MANUAL (MUST PUSH BUTTON)
B	SNOOZE	30 MINS	NO SNOOZE
C	RELAY ORIENTATION	NORMALLY CLOSED	NORMALLY OPEN
D	BUZZER BEHAVIOR	CONTINUOUS	4S ON/10 MINS OFF

EXPLANATIONS

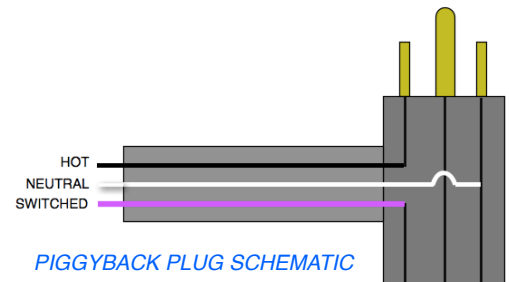
- A** Relay reset. With the jumper on, the relay will reset itself when the alarm condition has been corrected. In some situations it may be desirable to require the button to be pushed to reset the relay.
- B** The snooze alarm is a feature that ensures the buzzer isn't silenced and then forgotten. After 30 minutes of silence the buzzer will sound again.
- C** Sets the relay state when there is no alarm condition. Jumper on the pins = closed relay.
- D** Intermittent buzzer output is intended for wireless transmitters.



CLOSEUP OF THE PCB

2. POWER

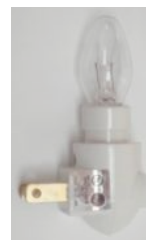
- The unit runs on AC power drawn from the piggyback plug. It is converted to DC voltage by a power converter.
- The 15A dry contact relay switches power to the back (receptacle) side of the piggyback plug to turn on devices like pumps.
- The system will carry 15A@120V or 10A@250V continuously.



PIGGYBACK PLUG SCHEMATIC

3. INSTALLATION

- Plug the power cord in to an outlet.
- The unit may be conveniently tested with an AC night-light.
- When the desired mode is tested good, install the unit.



NIGHT LIGHT

4. OPERATION

- During an alarm condition, the push button silences the buzzer while the LED continues to flash until the level is corrected. When there is not alarm the pushbutton tests the alarm and buzzer.
- When there is a power failure the relay will revert to "open". The relay will resume the correct state when power is restored.

Mar 8, 2013

Distributed by: CDI Equipment
80 Metcalfe Street Buffalo, NY 14206
800.777.2436 | 716.856.7115 (fax)
sales@cdibuffalo.com | www.cdibuffalo.com