

# Series HSC

## 316 Stainless Steel Centrifugal Pump

Flows to 140 GPM  
Pressure to 146 Ft. TDH



Model  
HSC-1 1/2MV

### Features:

- Chemical Resistant
- Simplicity of Design
- High Operational Efficiency
- Easy Maintenance
- Double Seal with Water Flush
- Multi-Stage

### Recommended Applications:

- Transferring
- Filtering
- Recirculation
- Solvents
- Acid and Alkalies

Penguin series HSC are corrosive-resistant all-purpose 316L stainless steel pumps ideal for many O.E.M. and chemical processing applications, including most acids and alkalies as well as solvents to 250°F. The high efficiency of this pump produces up to 90 feet of head. The HSC series pump is widely used for transfer of non-flammable, non-abrasive fluids which are compatible with pump component materials including cleaners, caustic materials, salt solutions, chlorinated solvents, photographic chemicals and de-ionized water. WET ENDS ARE AVAILABLE SEPARATELY FOR PLACEMENT ON CUSTOMERS' OWN MOTORS.

### Seals

Penguin series HSC pumps are supplied with an EPR/ mechanical seal. Optional seals include viton/carbon/ceramic and viton/silicon carbide/silicon carbide. A double mechanical seal available in the same materials with water flush can also be supplied.

### Motors

The pump is directly coupled to a 3450 RPM, ball bearing motor. All motors are totally enclosed fan cooled. Single phase motors are wired 115V and supplied with a cord and plug. Three phase motors are shipped unwired.

### Elastomers

Ethylene propylene (EPR) is the standard elastomer for O-rings and seal components. Viton is available as an option.

### Pedestal Mount

Pedestal mounting rather than close coupling is available. The pedestal bearing bracket, pump head, and motor are mounted on a common polypropylene base.

### Multi-Stage

For high pressures to 110TDH, a multi-stage pump is available.

# Series HSC

## 316 Stainless Steel Centrifugal Pump

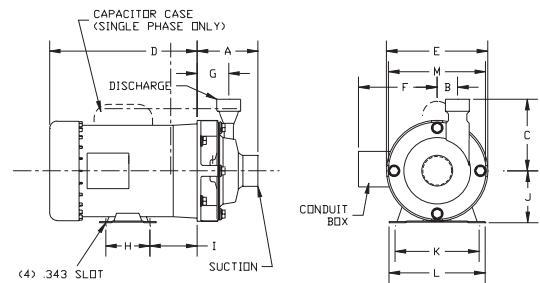
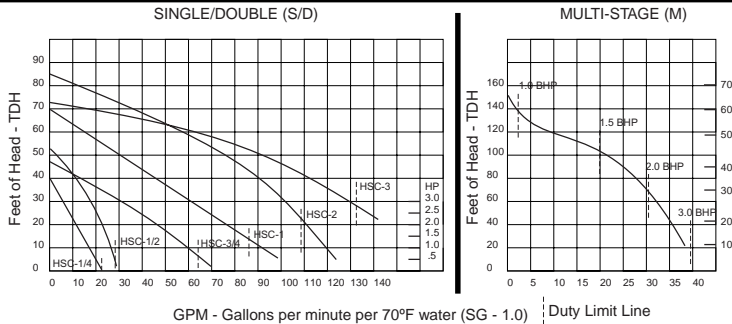
### Specifications

Pump					Motor					Dimensions				
Model	Max Flow (gpm)	Max Head (ft)	Suction	Discharge	HP	RPM	Volts	Hertz	Phase	Amps	Ht	Wth	Lth	Wt
HSC-1/4 S,D	23	40	3/4 FPT	1/2 FPT	1/3	3450	115/230	60	1	6.4/3.2	8	6	14	34
HSC-1/2 S,D	29	52			1/2		7.8/3.9	35						
HSC-3/4 S,D	64	46	1 1/2 FPT	1 FPT	3/4		208-230/460	50/60	3	1.9-1.8/1.9				33
							115/230	60	1	9.8/4.9				39
							208-230/460	3	2.7-2.6/1.3	41				
HSC-1 S,D	87	70	3/4 FPT	1/2 FPT	1		115/230	50/60	3	11/5.5				46
							208-230/460			3	3.4-3.2/1.6	41		
HSC-1 1/2 M	20	146	3/4 FPT	1/2 FPT	1 1/2		115/230			1	17.8-8.9	55		
							208-230/460			3	4.8-4.6/2.3	48		
HSC-2 S,D	110	75	1 1/2 FPT	1 FPT	2		208-230/460			3	5.8-5.4/2.7	55		
HSC-2 M	32	146	3/4 FPT	1/2 FPT	2						8.2-7.8/3.9	60		
HSC-3 S,D	132	85	2 FPT	1 1/2 FPT	3									
HSC-3 M	40	146	3/4 FPT	1/2 FPT	3									

### Dimensions

Model	A			B		C		D	E	F	G			H	I	J	K	L	M
	Single	Double	Multi	Single/Double	Multi	Single/Double	Multi				Single	Double	Multi						
HSC-1/4	4.37	5.58	-	2.0	-	4	-	9.31	5.68	4.5	2.12	3.33	-	3	2.56	3.5	4.87	6.5	6.87
HSC-1/2								10.31											
HSC-3/4	4	5.31	-	1.62	-	5	-	11.25	6.62	5.25	-	-	-	3	2.56	3.5	4.87	6.5	6.87
HSC-1								12.12											
HSC-1 1/2	-	-	6.06	-	-	-	-	12.12	6.62	5.25	-	-	-	3	2.56	3.5	4.87	6.5	6.87
HSC-2	4	5.31	6.06	1.62	2.06	5	4	12.12											
HSC-3	3.75	5.06	6.06	1.5	2.06	5	4	12.12											

### Performance Charts



### Nomenclature

HSC	1/2	D	E	P
Horizontal Stainless Steel Centrifugal Pump	Horsepower	Seal	Seal Material	Pedestal
	1/4 = 1/3	S=single seal	E=ethylene propylene carbon/ceramic	blank=close coupled
	1/2 = 1/2	D=double seal	V=viton/carbon/ceramic	P=pedestal mounted
	3/4 = 3/4	M=single seal/multi-stage	VSC=viton silicon carbide/silicon carbide	
	1=1			
	2=2			
	3=3			

Your Stocking Distributor:

Chemical Distributors, Inc. - Buffalo, NY - 800.777.2436 - Fax 716.856.7115

